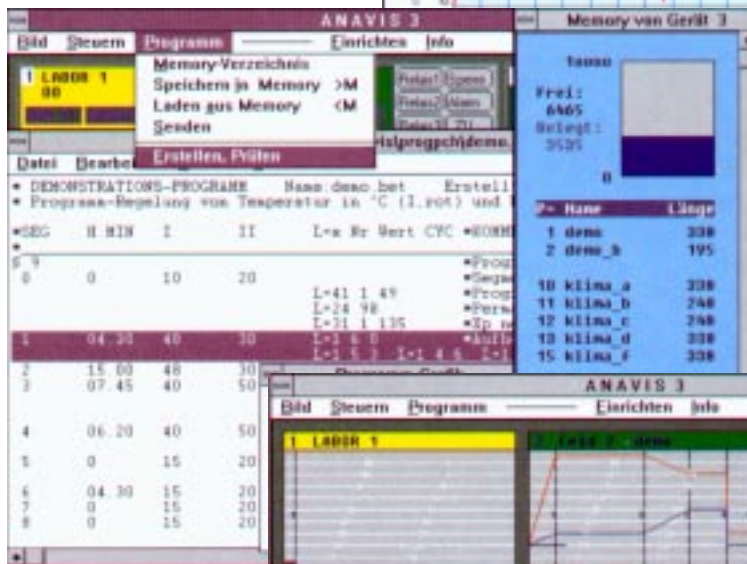


# ANAVIS 3



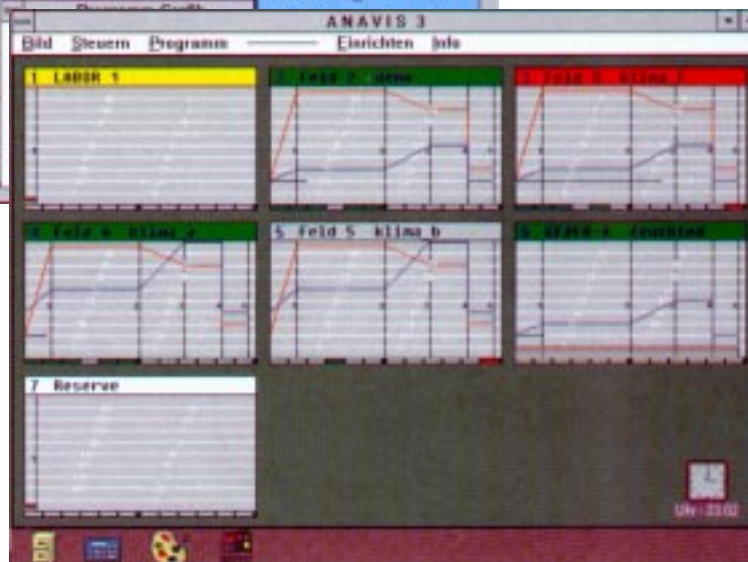
operate  
display

record  
print



programme  
administer

graphical  
sight



messen - steuern - automatisieren - messen - steuern - automatisieren - messen - steuern - automatisieren

# ANAVIS 3

With the software package ANAVIS 3 you may operate and monitor Programmers, Programmer Regulators and Data-Terminal ANAPROG PCH-3 in a user-friendly manner and with good overview. ANAVIS 3 returns printed records of task execution with high precision (quality assurance ISO 9000ff), documentation, maintenance).

The clear representation of programs with tables and control graphics simplifies programming and program management.

Since ANAVIS 3 was specifically developed for the devices PCH-3, software can be taken over virtually operationally. Installation work is limited essentially to the definition of the connections and the individual labeling. Thanks to the self-explanatory operation (menus, query windows), you can operate your system within short time.

Together with the basic functions, ANAVIS 3 contains high-performance supplements. You can define command sequences (macros) which are then triggered manually or automatically by signals or timers. To every connected device, a full-format equipment display can be designed that presents the system graphically, contains useful information, displays the current state and from which the operator may activate macros. A further module is used for scaling, supervising and associating of acquired data.

The setup menu enables the optimal adaptation to the area of application. Examples of applications: Glowing, hardening and stoves; thermal and climatic chambers; process engineering, biotech; environmental simulation; thermal shock test; data acquisition, supervising and monitoring; test rigs in production, research and development.

## Technical Data:

- System:**
- n Connection of up to devices ANAPROG PCH-3 per Computer (Programmers, Programmers Regulators and Data-Terminals) by means of up to 4 serial interfaces (Com 1...4). Uninterrupted local operating in the case of breakdown of an interface or of the computer.
- Image:**
- n Clear representation of the devices PCH-3 in analogy to their front panel.
  - n Graphic representation of the current programs, with the time pointer.
  - n Equipment displays existing of text, drawings, photographs and of numerical or graphic fields (continuously refreshed). Video keys for activation of macros.
- Record:**
- n Colored full-format representation of the record of up to 12 analog and up to 6 digital signals per image. Up to 4 analog scales. Supplementary lines of text (including variables) to the documentation of the process. Variable time dilatation and scaling to the refining analysis.
  - n Supplementary record to the differentiation or doubling of the record.
  - n Color printing of the represented records with high resolution.
  - n Automatic save of the recordings. Stand-alone software for evaluation and printout of record data (visave).
- Operating:**
- n Remote operating of the devices PCH-3 with menus and informative query windows.
  - n Direct output of digital and analog signals by the devices.
  - n Activation of orders (macros) with the job list or the order timer.
- Program:**
- n Generation and modification of the programs for the devices PCH-3 in text format.
  - n Table representation with graphic overview and plausibility check.
  - n Program management in the PC and in the devices (directory, transfer).
  - n Identification of the programs with file name in the memory of the devices PCH-3.
  - n Generation of orders with instructions to control and for generation of event controlled text logs (macros).
- Computer:**
- n Personal computer (PC), compatible IBM AT, minimal: 386 SX, 20 MHz.
  - n Color screen (640x480, 800x600, or more)
  - n Color printer (at a minimum 180x180 ppi; graphics-capable)
  - n WINDOWS 3.1, 3.11, 95, NT.
- Software:**
- n Operating under WINDOWS, parallel to other applications.
  - n Simple software interface in the PC (DLL for process data and devices commands).
  - n Documentation and screen in German, English or French.